

D7033

General Information

The D7033 is a 4-wire Alpha-Numeric LCD keypad. It may be surface mounted, mounted to standard single or double gang boxes, or to 4 inch square boxes.

The following is a chart of general wiring guidelines:

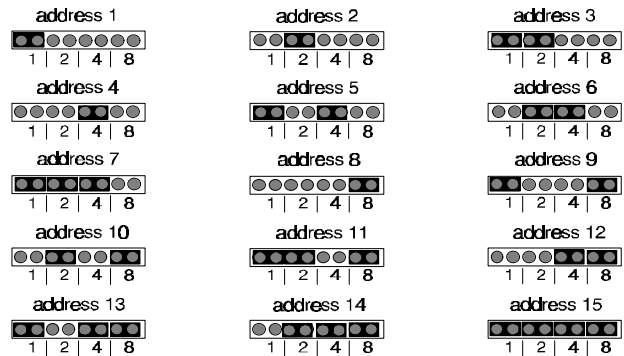
Wire Gauge	22 AWG (0.8 mm) minimum. 18 AWG (1 mm) is required for NEC-NFPA-70.
Wire Type	non-shielded, 4-wire
Max number of keypads allowed per system	4
Max distance allowed between the control and the keypad	1,000 feet (304.8 m)
Max distance of keypad wiring per system	4,000 feet (1219.2 m)

Keypad Addresses

Important: Each keypad must have its address set with its address pins. The keypads must also be programmed at the control panel.

- Select the keypad address (1-15). Place the shorting jumpers over the address pins as shown at the top of the next column.

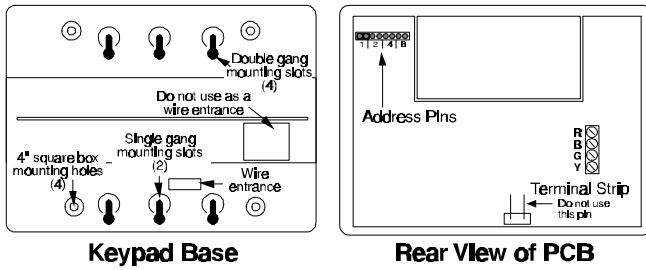
Remember: Each keypad must have its own address, and each address can only support one device.



Mounting

The keypad should be mounted no higher than shoulder height of the shortest person using the system.

- Remove the keypad's cover. Insert a small flat-head screwdriver in each slot at the bottom of the base. Press up, and pull the cover off.
- Surface Mounting: Use the base as a template and mark the location of the mounting holes (use any holes). Provide an opening in the mounting surface for the wiring. Pre-start the mounting screws. Do not secure the base at this point.
- Electrical Box Mounting: See the diagram on page 2 to select the mounting holes. Do not secure the base at this point.



Instruction Label and Slide

An instruction label is provided and needs to be placed onto the pull-out slide. The slide may be installed to pull from the left or right (slide it into rear of base). Be careful when installing the label; place it as close to the pull-tab as possible.



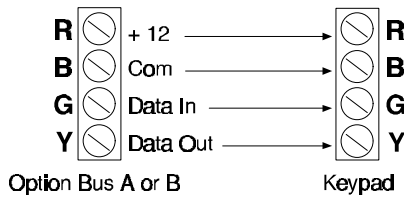
Wiring

Caution: Be sure all wiring is unpowered before routing. Keypad wiring can not be shared with multiplex, options bus, telephone, or siren wiring.

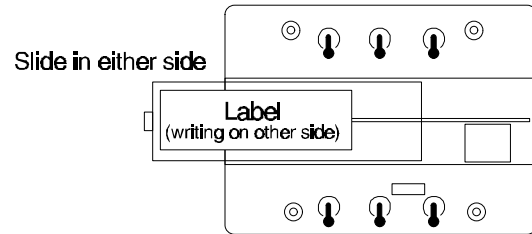
- Route wiring from the control panel to the keypads.

Important: Up to 2 keypads may be placed along any single 1,000 foot run of 22 AWG (.8 mm) wire. Three keypads may be used on any single 1,000 foot run of 18 AWG (1 mm) wire.

- Bring the wiring through the Wire Entrance in the keypad's base.
- Secure the base.
- Connect the wiring to the keypad's terminal strip.



- Place the keypad cover onto the base. While feeding the excess wiring out of the rear of the base, press the cover straight in until it latches on.



In Case of Trouble

See the following chart:

Keypad Notification	Possible Cause
Continuous keypad sounder PLUS "System Fault" display	<ul style="list-style-type: none"> The yellow and green wires have been disconnected. The keypad has not been programmed properly at the control panel. The control panel has malfunctioned. Replace the control panel.
Control panel does not respond to keypad input.	<ul style="list-style-type: none"> A keypad's address has not been set with its address pins.
Three beep error tone on all keypads.	<ul style="list-style-type: none"> Invalid keypad input.

